

place[®]

Public seating. Personal space.

Designed by
Curt Fentress &
Michael McCoy



ARCONAS[®]
— exceptional public seating

place®

Introducing Place, next-generation public seating system delivering comfort and practicality in an elegant new design. With integrated power and USB at every seat, generous tablet arms, drink holders, under-seat storage -- and plenty of personal space -- Place lets travellers work, read, game or consume media in style.



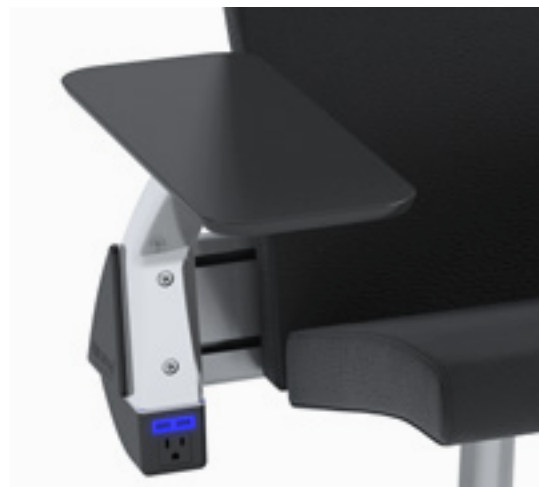
The Place system's support beam creates more under-seat space and safely conceals all power cords for integrated power modules.

Power for Everyone

Passengers can charge laptops, tablets, phones, MP3 players and gaming devices using Place's integrated power units. Each seat can be equipped with an AC connection and two powered USB ports. Blue LED lamps indicate that power is available.



Power pod with standard arm



Power pod with tablet arm

Place with standard arms.

Cantilevered seating provides ample under-seat storage space for carry-on luggage and other bags.



Place with tablet arms.

Optional tablet arms create even more personal space between seats so passengers can eat, work or play in comfort.



Place with tablet arms and integrated drink holders.

Drink holders accommodate a range of cup and bottle sizes to keep things clean and prevent spills.



construction

Supports, Legs & Arms

-- Die-cast Aluminum

Beam

-- Extruded Aluminum

Seat & Back

-- High resiliency moulded foam over contoured steel pans

Arm

-- Die-cast aluminum with arm pad or tablet

Glides

-- Adjustable
-- Anti-slide

Power

-- AC outlet & 2 USB ports
-- North America, UK & Europe Standards

options

-- Arms
-- Drink holders
-- Floor mounting glides
-- Custom embroidery on seatback

finishes

Supports, Legs & Arms

-- Aluminum with Bright polished accents

Arms

-- Black moulded polyurethane pad or phenolic tablet surface

Upholstery

-- Vinyl, faux leather, leather, woven textiles or COM

single units with arm pads

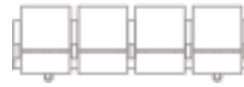
two seat unit	w	49.5"	126 cm
	d	30"	76 cm
	h	35.5"	90 cm
	sh	18.5"	43 cm



three seat unit	w	72.5"	184 cm
------------------------	---	-------	--------



four seat unit	w	95.5"	243 cm
-----------------------	---	-------	--------



five seat unit	w	119"	302 cm
-----------------------	---	------	--------



single units with tablet arms

two seat unit	w	59.5"	151 cm
	d	30"	76 cm
	h	35.5"	90 cm
	sh	18.5"	43 cm



three seat unit	w	86"	218 cm
------------------------	---	-----	--------



four seat unit	w	112.5"	286 cm
-----------------------	---	--------	--------



five seat unit	w	139"	353 cm
-----------------------	---	------	--------



standard arm seat to seat dimension	w	23.5"	60 cm
--	---	-------	-------



tablet arm seat to seat dimension	w	26.5"	67 cm
--	---	-------	-------



tablet arm	w	6.5"	17 cm
	d	19"	48 cm



designers



curt fentress



michael mccoy

"These days, people need more comfort and space -- for devices, food, bags and other items. They also need somewhere to recharge, in every sense of the word. We designed Place to be an elegant, ergonomic seating system that serves people's needs. With Place, every seat is the best seat in the house."

Curt Fentress and Michael McCoy's inspiration for Place.